

osnova stana
R = 1:100

TRG REPUBLIKE br. 16

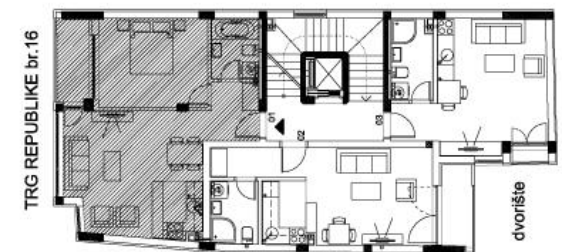
STAN 01 - dvosoban

1	ULAZ	3.93 m²
2	KUHINJA	4.08 m²
3	KUPATILO	4.05 m²
4	DN. SOBA SA TRPEZ.	19.57 m²
5	SOBA	13.34 m²
6	LOĐA	3.55 m²

UKUPNO STAN br.1	48.52 m²
- 3%	47.06 m²



OSNOVA 1. SPRATA



1. SPRAT
STAN br.1