

osnova stana
R = 1:100

TRG REPUBLIKE br. 16

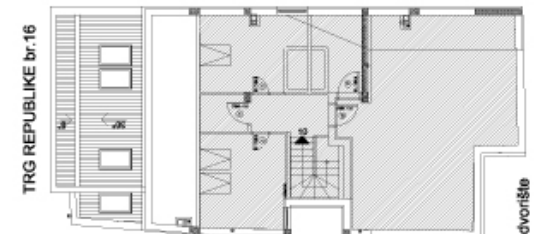
STAN 10 - četvorosoban

7	HODNIK	6.18m²
8	SOBA	9.13m²
9	KUPATILO	2.69m²
10	SOBA	8.54m²
11	WC	2.39m²
12	TERASA-NATKRIVENA	8.42m²
13	TERASA	38.18m²
STAN br.10 (Dx)		75.53m²

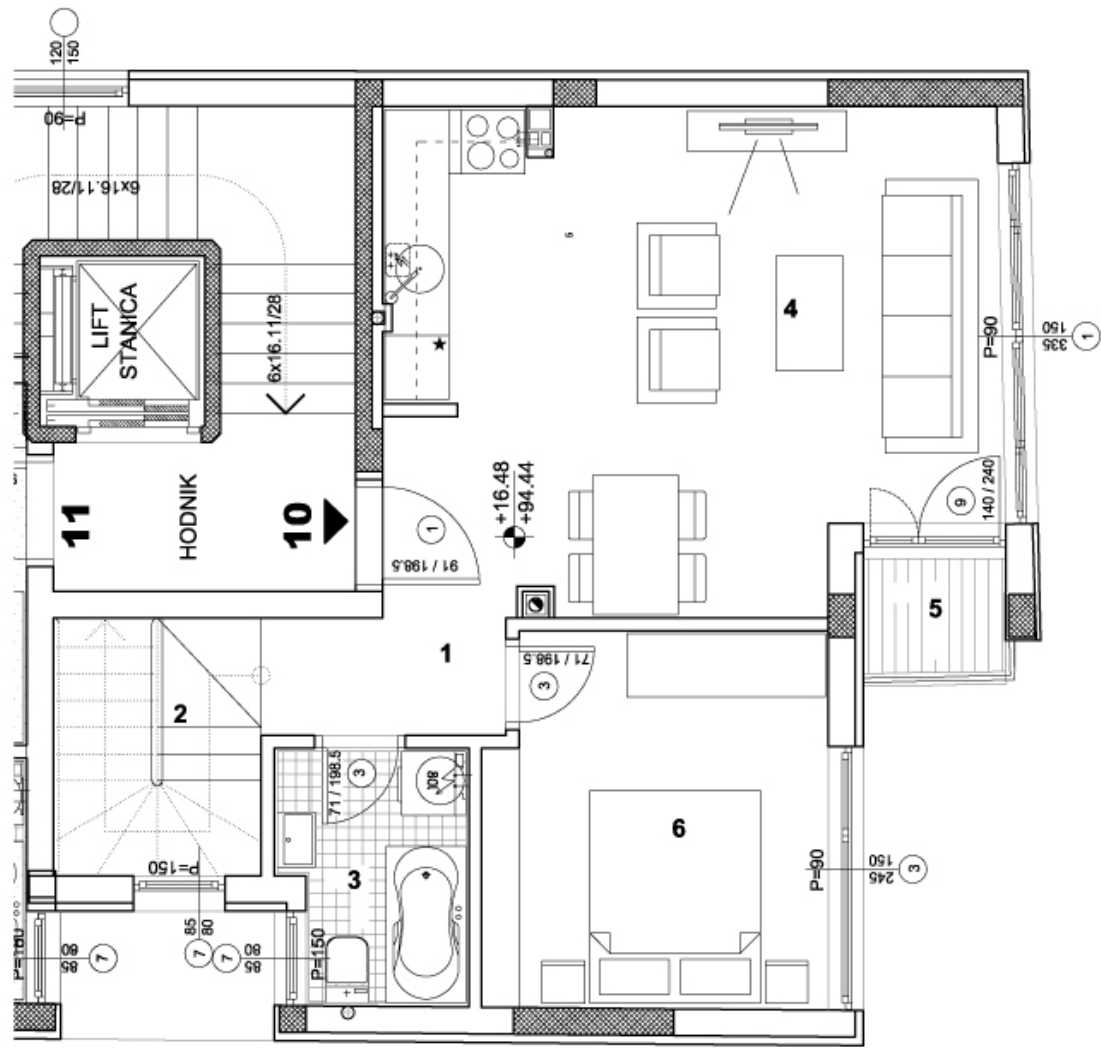
UKUPNO STAN br.10 (Pk+Dx) 124.56m²



OSNOVA DUPEKSA



DUPLEKS
STAN br.10

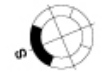


osnova stana
R = 1:100

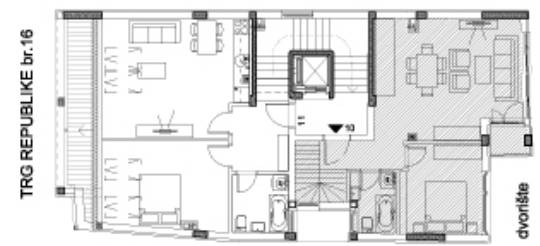
TRG REPUBLIKE br. 16

STAN 10 - četvorosoban

1	ULAZ	5.49 m²
2	STEPENICE	4.66 m²
3	KUPATILO	3.66 m²
4	DN. SOBA SA TRPEZ.	22.71 m²
5	LODJA	1.88 m²
6	SOBA	10.63 m²
STAN br.10 (Pk)		49.03 m²



OSNOVA POTKROVLJA



POTKROVLJE
STAN br.10