

osnova stana  
R = 1:100

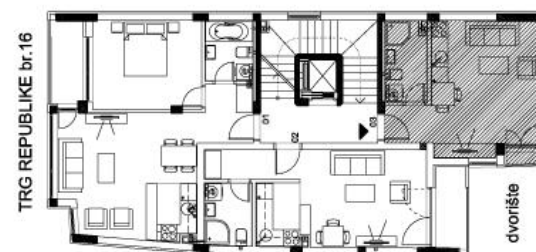
**TRG REPUBLIKE br.16**

**STAN 03 - garsonjera**

<b>1</b>	<b>ULAZ</b>	<b>2.37 m2</b>
<b>2</b>	<b>KUPATILO</b>	<b>4.72 m2</b>
<b>3</b>	<b>DN. SOBA SA TRPEZ. I KUH.</b>	<b>19.98 m2</b>
<b>4</b>	<b>LODJA</b>	<b>0.55 m2</b>
<b>UKUPNO STAN br.3</b>		<b>27.62 m2</b>
		<b>- 3% 26.79 m2</b>



**OSNOVA 1. SPRATA**



dvorišna fasada

**1. SPRAT**  
**STAN br.3**