

osnova stana
R = 1:100

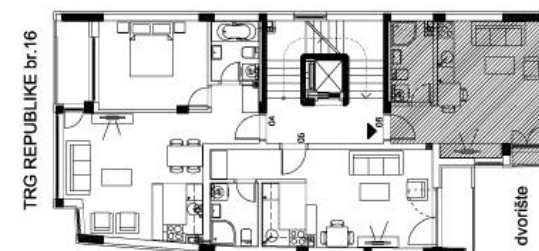
TRG REPUBLIKE br.16

STAN 06 - garsonjera

1	ULAZ	2.39 m2
2	KUPATILO	4.72 m2
3	DN. SOBA SA TRPEZ. I KUH.	20.01 m2
4	LOĐA	0.59 m2
UKUPNO STAN br.3		27.71 m2
		- 3% 26.88 m2



OSNOVA 2. SPRATA



dvorišna fasada

2. SPRAT
STAN br.6