

osnova stana
R = 1:100

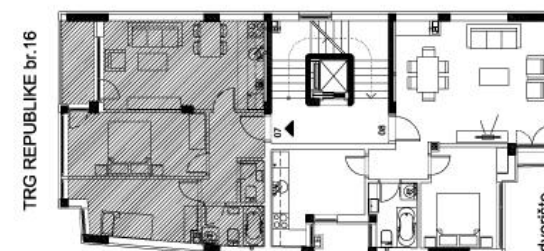
TRG REPUBLIKE br.16

STAN 07 - trosoban

| | | |
|-------------------------|---------------------------|----------------------|
| 1 | ULAZ | 5.40 m2 |
| 2 | KUHINJA | 3.30 m2 |
| 3 | KUPATILO | 3.50 m2 |
| 4 | DN. SOBA SA TRPEZ. | 16.38 m2 |
| 5 | LODA | 3.61 m2 |
| 6 | WC | 1.40 m2 |
| 7 | SOBA | 9.63 m2 |
| 8 | SOBA | 11.92 m2 |
| UKUPNO STAN br.7 | | 55.14 m2 |
| | | - 3% 53.49 m2 |



OSNOVA 3. SPRATA



3. SPRAT
STAN br.7