

osnova stana
R = 1:100

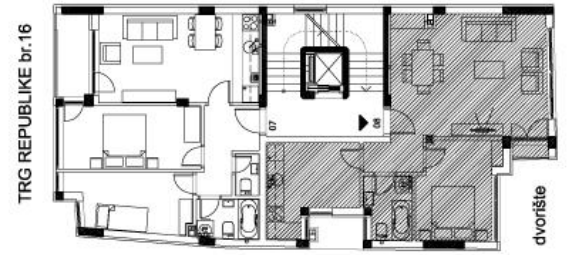
TRG REPUBLIKE br.16

STAN 8 - dvosoban

| | | |
|-------------------------|---------------------------|-----------------------------|
| 1 | ULAZ | 2.65 m2 |
| 2 | KUHINJA | 9.85 m2 |
| 3 | KUPATILO | 4.04 m2 |
| 4 | DN. SOBA SA TRPEZ. | 26.40 m2 |
| 5 | LOBA | 0.58 m2 |
| 6 | SOBA | 10.60 m2 |
| UKUPNO STAN br.8 | | 54.12 m2 |
| | | - 3% 52.50 m2 |



OSNOVA 3. SPRATA



3. SPRAT
STAN br.8